



Miami County Park District Garbry Big Woods Sanctuary

2540 E. Statler Road, Piqua

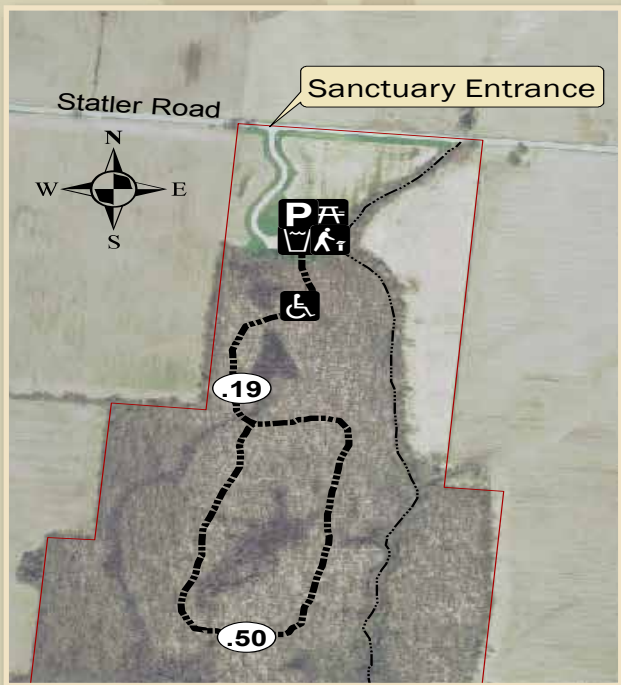
Natural Features

- 100 Acres
- Woodland
- Wild flowers
- Rare plant community

Facilities

- Boardwalk loop .7 miles
- Drinking water

This beautiful 100 acre park hosts an undisturbed wet beech-maple forest. Each year there is a prolific spring flower display and a colorful autumn show. Many of the different plants and trees are labeled for easy identification. The handicapped accessible boardwalk winds through the woodland habitat helping to preserve the sensitive and rare plant community.



Park Hours

Open 365 days a year from 8 a.m. to sunset.



Charleston Falls Preserve F.L. Blankenship Farrington Reserve Honey Creek Preserve
Garbry Big Woods Reserve & Sanctuary Hobart Urban Nature Preserve
Lost Creek Reserve Goode Prairie Reserve & Preserve Great Miami River Recreational Trail
Twin Arch Reserve Greenville Falls State Scenic River Area Maple Ridge Reserve
Stillwater Prairie Reserve John A. Wannemacher Nature Reserve