



# Miami County Park District Hobart Urban Nature Preserve

## Natural Features

- 82 Acres
- 3 Acre wildlife pond and wetlands
- Planted prairie site

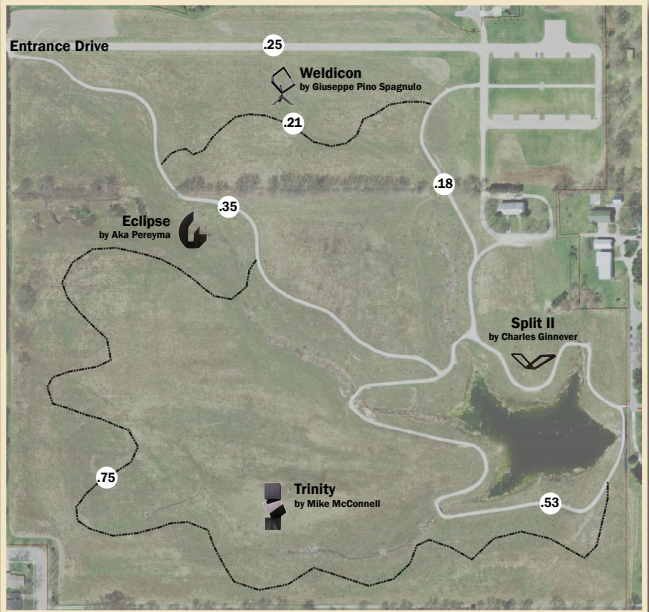
## Facilities

- Donor recognition area
- 2.5 miles of trail
- 4 welded sculptures
- Adjacent to the City of Troy's Menke Park

1400 Tyrone, Troy

Visitors can escape the hustle and bustle of city life at this unique park. It is a great place for bird-watching, leisurely walks and observing nature.

A trail system leads you through open grasslands, beside a wetland and past four welded steel, modernist, sculptures donated from the collection of the Hobart Welding Institute. The sculptures are placed in distinct habitats throughout the park to highlight the relationship between nature and art.



## Park Hours

Open 365 days a year from 8 a.m. to sunset.

Charleston Falls Preserve   F.L. Blankenship   Farrington Reserve   Honey Creek Preserve  
Garbry Big Woods Reserve & Sanctuary   Hobart Urban Nature Preserve   Lost Creek Reserve  
Goode Prairie Reserve & Preserve   Great Miami River Recreational Trail   Twin Arch Reserve  
Greenville Falls State Scenic River Area   Maple Ridge Reserve   Stillwater Prairie Reserve  
John A. Wannemacher Nature Reserve