



Miami County Park District Lost Creek Reserve

Natural Features

- 457 Acres
- Planted Walnut Grove
- Lost Creek
- Woodlands
- Oak Savanna

Special Features & Facilities

- Administration office, house built in 1883
- Historic Knoop cemetery (entry by permit only)
- Working farm
- 5 Historic barns
- Knoop cabin
- Future home of the Agricultural Heritage Center
- 3.4 Miles of trail

2385 E. State Route 41, Troy

The site of the Historic Knoop Homestead whose rich history encompasses over 200 years and five generations of Knoops. The Victorian Era farm house and historic barns still decorate the landscape. A nature trail takes you past farm fields, through wooded areas and along Lost Creek making this park a great place for hiking, cross country skiing and viewing wildlife.

Hours

Park Hours

Open 365 days a year from 8 a.m. to sunset.

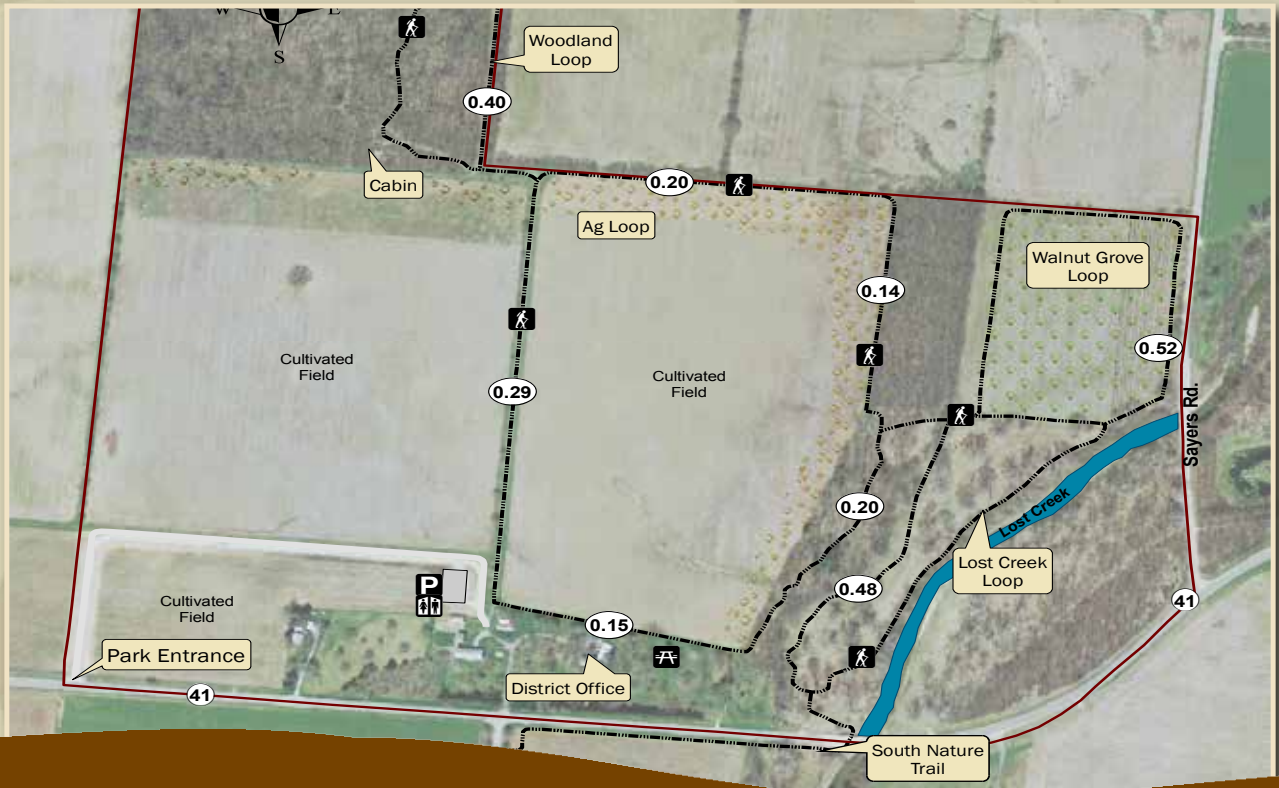
Office Hours

Weekdays 8 a.m. to 4 p.m.

2645 E. St. Rt. 41

Troy, Ohio 45373

Phone: 937-335-6273



www.MiamiCountyParks.com

Charleston Falls Preserve Farrington Reserve F.L. Blankenship Garby Big Woods Reserve & Sanctuary Goode Prairie Reserve & Preserve Great Miami River Recreational Trail Greenville Falls
Hobart Urban Nature Preserve Honey Creek Preserve Lost Creek Reserve Maple Ridge Reserve Stillwater Prairie Reserve Twin Arch Reserve John A. Wannemacher Nature Reserve