



Miami County Park District Stillwater Prairie Reserve

Natural Features

- 260 Acres
- Native Ohio prairie
- Woodlands
- Wetland with observation platform
- 2 Fishing ponds and a wildlife pond

Facilities

- Shelter with electricity and a grill
- 1600' Boardwalk
- Picnic areas with grills
- 3 Miles of trail

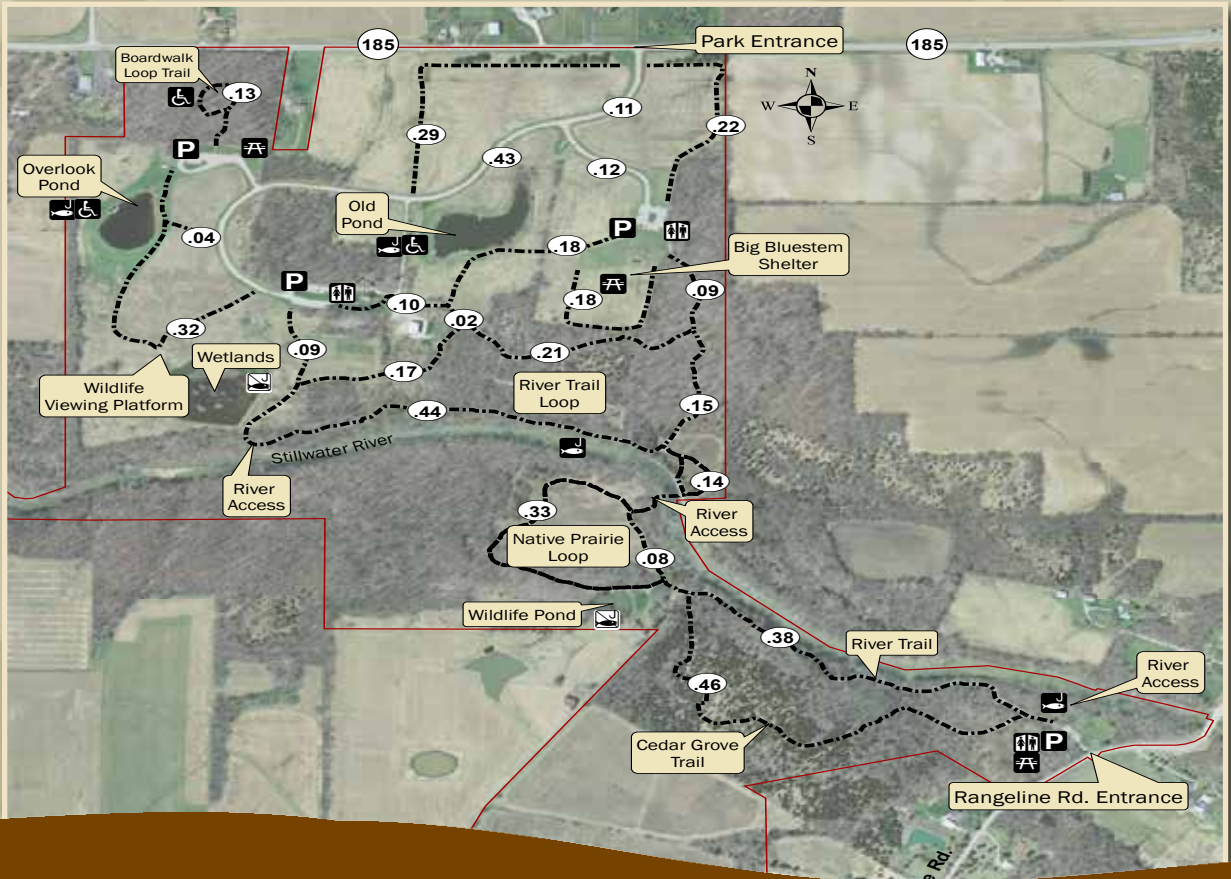
9750 St. Rt. 185 and 7790 N. Rangeline Road, Covington

This park is situated along the Scenic Stillwater River. A circular hiking trail passes through fields, woodlands, marshy habitats and shrub lands. Segments of the main trail follow along the river.

Three man made ponds and the Stillwater River provide fishing opportunities for visitors. Diverse topography and vegetation make this park a perfect place for hiking, picnicking, bird watching and cross-country skiing.

Hours

- Park Hours**
Open 365 days a year from 8 a.m. to sunset.



www.MiamiCountyParks.com

Charleston Falls Preserve Farrington Reserve F.L. Blankenship Garbry Big Woods Reserve & Sanctuary Goode Prairie Reserve & Preserve Great Miami River Recreational Trail Greenville Falls
Hobart Urban Nature Preserve Honey Creek Preserve Lost Creek Reserve Maple Ridge Reserve Stillwater Prairie Reserve Twin Arch Reserve John A. Wannemacher Nature Reserve